

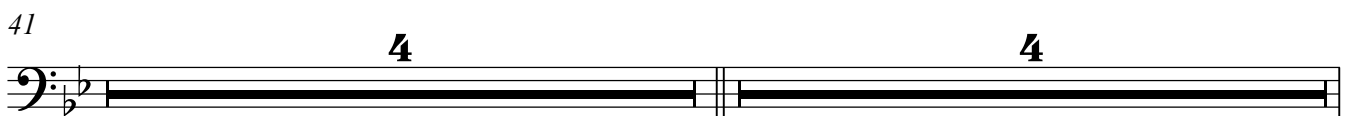
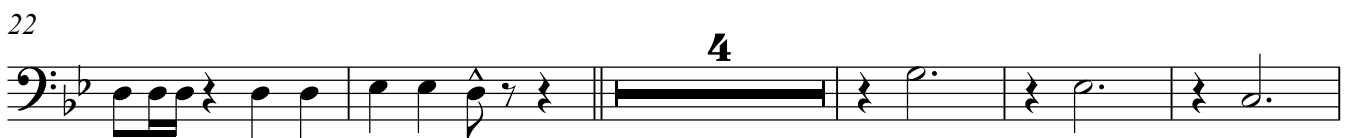
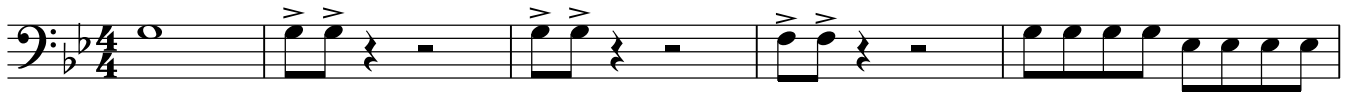
Santificação

Trombone 2

Elaine Martins

Arranjo: VSSSCORES
Assembleia de Deus - Beira Rio
Jan/2016

♩ = 72



[illegible]

The bass line of 'The Rose Tree' is written in G major (one sharp) and 2/4 time. It consists of two measures. The first measure contains a quarter rest, followed by a quarter note G, a quarter note A, and a quarter note B. The second measure contains a quarter note C, a quarter note D, a quarter note E, and a quarter note F. The key signature is one sharp (F#).

Musical notation for the bass line of 'The Rose Tree'. The key signature is three sharps (F#, C#, G#). The melody starts with a whole note G2, followed by a half note F#2, and a half note E2. After a double bar line, there is a measure with a whole rest, followed by a measure with a quarter note D2, an eighth note C#2, and a quarter note B1. The piece ends with a whole note G2.